

MARK™ M-LOK™ RAIL INSTALLATION INSTRUCTIONS

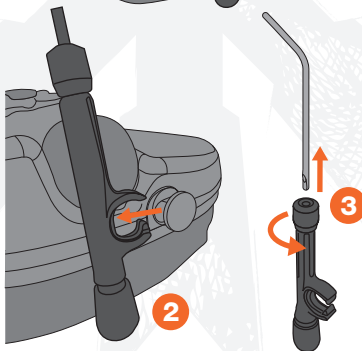


1 Remove 3M Peltor™ headset from OEM headband assembly by pivoting headband stems 90° on ear cups. This will line up the flat surfaces on the ear cup studs.

2 Pop stems off studs on ear cups. Free the headband cable from the headband cover by carefully slicing open leather cover with an X-Acto blade. DO NOT KNICK THE WIRE WHILE CUTTING.

3 Turn stems 90° on OEM wire forms and pull them off the wires.

4 Reassemble the stems in reverse order on the MARK™ wire forms.

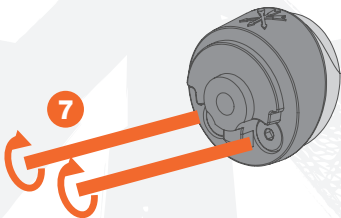
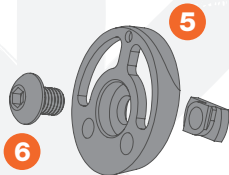


MARK™ M-LOK™ RAIL INSTALLATION INSTRUCTIONS



Remove Center Screw / Washer, Top Cap, and Wire Form from Hub Assembly. Remove two Socket Head Cap Screws and MARK™ Center Section. Loosen Screw / M-LOK™ Nut through MARK™ Rear Plate to prepare for install on M-LOK Helmet Rail Section.

- 5** Place MARK™ M-LOK Backer Assembly into desired position on M-LOK Rail.
- 6** Tighten Center M-LOK Screw. Ensure M-LOK Nut is fully perpendicular to M-LOK Slot. If not, completed MARK™ assembly could pop off rail under pressure.
- 7** Place MARK™ Center Section over installed MARK™ M-LOK Plate Assembly. Install two Socket Head Cap Screws and tighten (finger tight).



MARK™ M-LOK™ RAIL INSTALLATION INSTRUCTIONS



- 8** Slide MARK™ Top Cap onto MARK™ Lower Assembly from the top down.

- 9** Reinstall Washer and Center Screw. The screw should be finger tight. Tension adjustment can be made from there depending on the individual preference. MARK™ is designed to pivot on rail for stowage when not in use.

NOTE: INWARD PRESSURE OF EAR CUPS CAN BE ADJUSTED BY BENDING THE WIRE FORMS INWARD OR OUTWARD.

MARK™ SYSTEM CAN BE USED WITH MSA/SORDIN™ - BASED HEADSETS WITH ADDITION OF UNITY TACTICAL SARA™ (SORDIN ARC RAIL ADAPTER) KIT, SOLD SEPARATELY.

