

# SARA™

SORDIN  
ARC RAIL  
ADAPTER



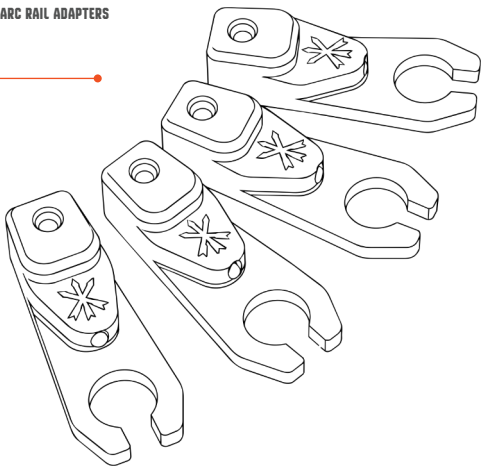
USER

INSTRUCTIONS

 **UNITY**

SARA™ kits allow for integration of MSA / Sordin®-based electronic ear protection and communication headsets with helmet rails via MARK® or 3M® Helmet Adapters. SARAs are held in place by the existing OEM studs in the MSA / Sordin® headset housing. SARAs accept both swaged and non-swaged wireforms. They are compatible with almost every helmet mount wireform on the market. Each kit comes with replacement ESS Studs, allowing both over-the-head and behind-the-head headsets to be converted.

Four (4) SARA™ SORDIN ARC RAIL ADAPTERS



1

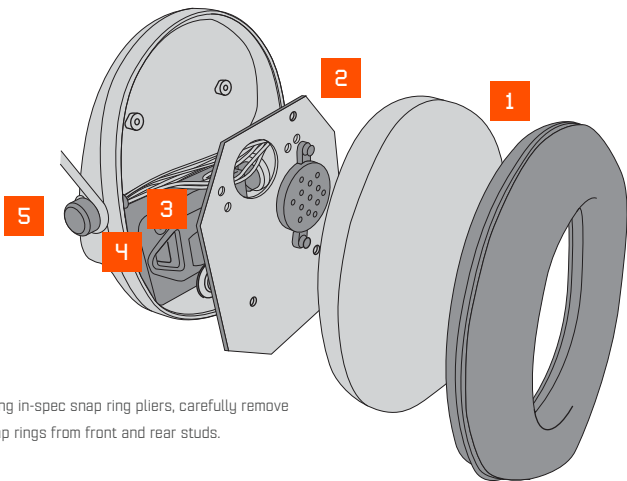
Carefully pop foam or gel ear cup off shell and remove foam insert to expose circuit board.

2

Remove the four tiny screws that secure the circuit board to the polymer housing and set them aside (DO NOT LOSE THEM).

3

Carefully pull circuit board out of shell. Make sure not to disturb wires connecting circuit board to control module and microphone.

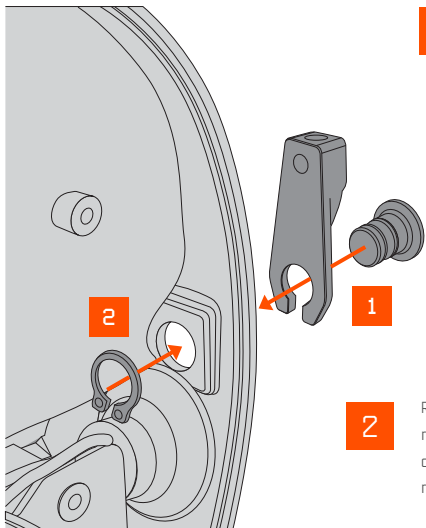


4

Using in-spec snap ring pliers, carefully remove snap rings from front and rear studs.

5

Pull studs out of shell to free headband (take care not to damage any electrical wires).



1

Place SARA™ onto stud where headband wires were, and push assembly through hole in shell.

1

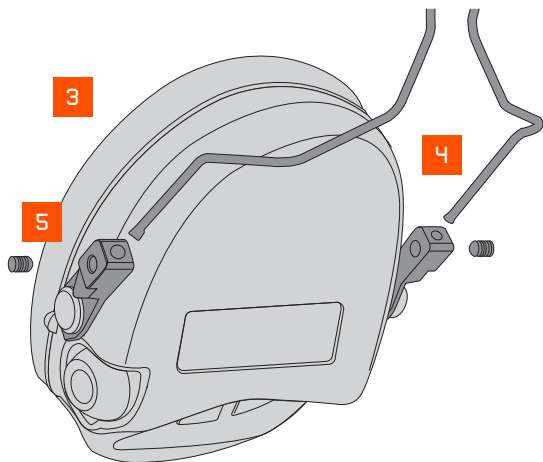
2

Replace original snap ring (or use included replacement snap rings if originals were damaged during disassembly) using snap ring pliers.



**NOTE:**

Ensure snap ring fully seats into recess in stud and closes tightly. Otherwise, studs can fall out during use. It may help to use a small punch to put pressure on closed side of ring while using snap ring pliers to seat the split side.



3

Once both sides of the shell are complete, reinstall circuit board, foam, and ear cup.

4

Push MARK® or Peltor® helmet rail mount wires into tops of SARA's™ until they bottom out.

5

Carefully tighten set screws. DO NOT OVER TIGHTEN.



1

MSA/Sordin™ headsets were never designed to be disassembled. This process can be a little tricky and frustrating without the right tools. Installers will most likely need both hands. It is recommended that the headset ear cup assembly be gently placed in a padded vise to put slight pressure on the studs. This will make removing and installing the snap rings easier.



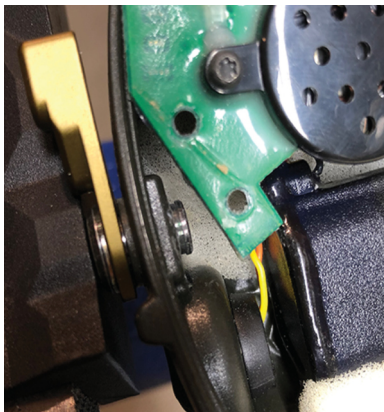
**NOTE:**

Take care when tightening the vise jaws. Use only enough pressure to secure the headset assembly. Do not crack the housing!



2

The vise helps relieve pressure on the studs, freeing up the snap rings for easier removal with snap ring pliers. Use proper size snap ring pliers with tips smaller than 0.050".



3

Once OEM headband wires have been removed, replace with SARA's™ and reinstall studs in housing. Place the new assembly back in the vise. The pressure will help to expose the recesses in the studs where the snap rings will fit.



4

It is recommended to use a small punch or screwdriver to help hold the snap ring in place during install. This is probably the most frustrating part of the SARA™ install process because of the tight work space. Take your time and ensure the snap ring is fully seated in the groove around the stud. Once satisfied that it is properly seated, use the snap ring pliers to close up the ring as much as possible.

**NOTE:**

After install, pull on the studs from the outside to ensure the snap rings are properly positioned to hold the assembly together.

