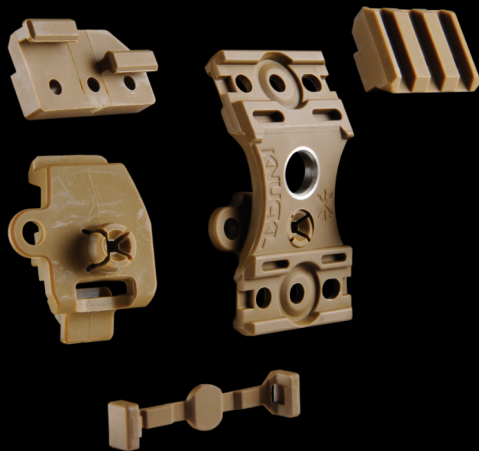


KNUCKL™

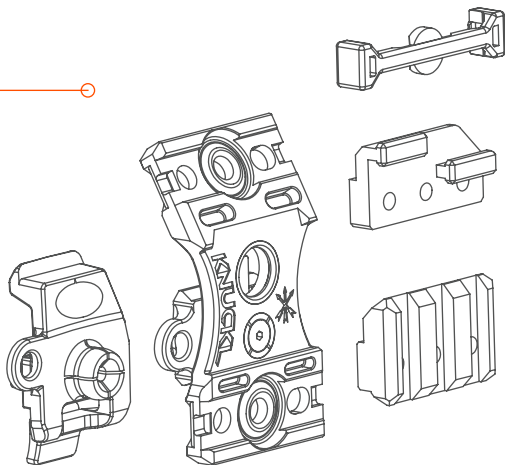




PRODUCT OVERVIEW

KNUCKL™ is a modular accessory mount for modern tactical helmets. It offers tension-adjustable 3-axis articulation and the ability to mount up to two individual accessories. KNUCKL™ allows operators to place mission critical accessories on a single side of the helmet, in the same space as a single accessory directly mounted to the rail. It helps keep helmet-mounted gear from interfering with cheek weld. KNUCKL™ will attach to Ops-Core® ARC and Team Wendy® EXFIL® rails. It will accept direct-mounted SureFire® Scout® lights, Princeton Tec® MPLS, Contour® Cameras and UNITY™ FUSION™ accessories.

???



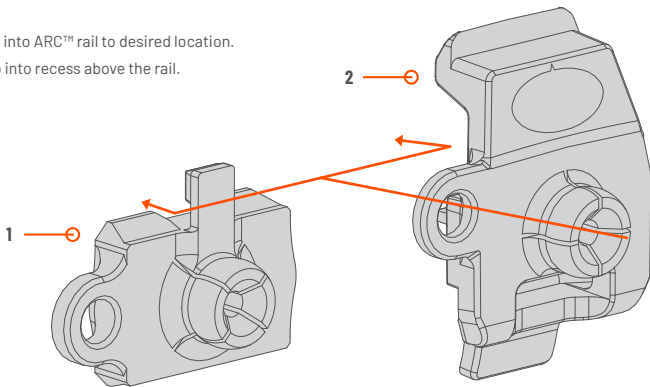
**CAUTION:**

WARNING: OVER-TORQUING FASTENERS CAN DAMAGE YOUR MOUNT AND WILL NOT BE COVERED BY WARRANTY.

SELECT THE APPROPRIATE ADAPTER FOR THE HELMET RAIL. KNUCKL™ INCLUDES ADAPTERS FOR BOTH OPS-CORE ARC™ AND TEAM WENDY EXFIL™ RAILS.

1

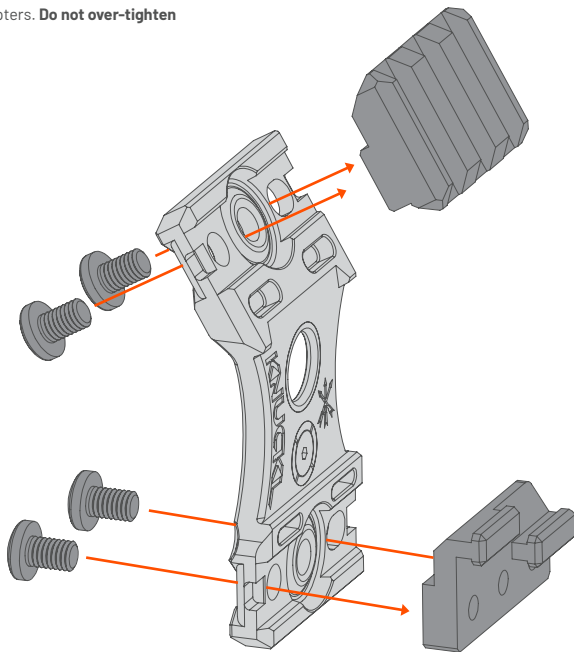
Slide ARC™ adapter into ARC™ rail to desired location. Detent tab will snap into recess above the rail.

**2**

Remove the accessory plate and screws from EXFIL™ rail. Tip EXFIL™ adapter into T-Slot and pivot down until it snaps securely in place in accessory plate recess.

3

Choose the desired accessory components (included). Use the included thread-forming screws for mounting polymer Picatinny Rail Section and Contour Camera Adapters. **Do not over-tighten hardware.**



4

Surefire SCOUT™ pattern footprints can mount directly to KNUCKL™. Use included 8-32 hardware. Secure screws using a T15 bit driver. Lightly snug all screws before applying final torque to any.

Torque to 16 in-lbs.

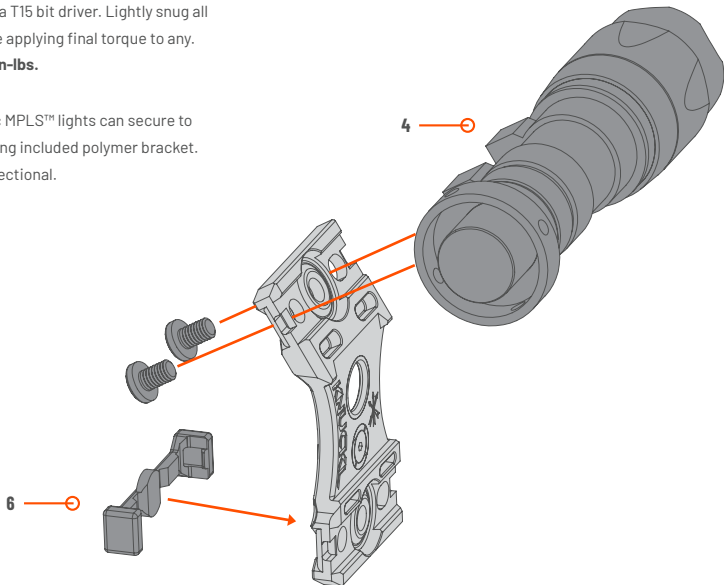
5

FUSION™ accessories can mount directly to KNUCKL™. Use included 10-32 hardware. Secure screws using a T15 bit driver. Lightly snug all screws before applying final torque to any.

Torque to 16 in-lbs.

6

Princeton Tec MPLS™ lights can secure to KNUCKL™ using included polymer bracket. Bracket is directional.

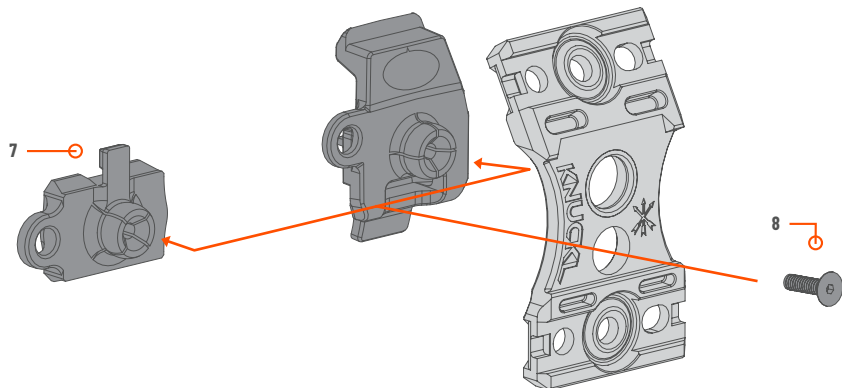


7

Press KNUCKL assembly onto the ball joint of the adapter installed on the helmet rail.

8

Thread tension screw into ball joint and tighten to desired tension.



INFO@UNITYTACTICAL.COM

©2025 UNITY Tactical. All Rights Reserved.
Specifications subject to change without notice. PAT: UTIP.CO

