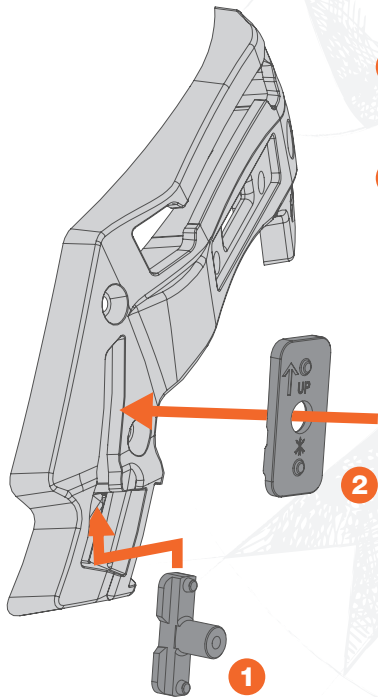


# PLATFORM ADAPTER for *opscore* AMP™ and EXFIL™ RAIL

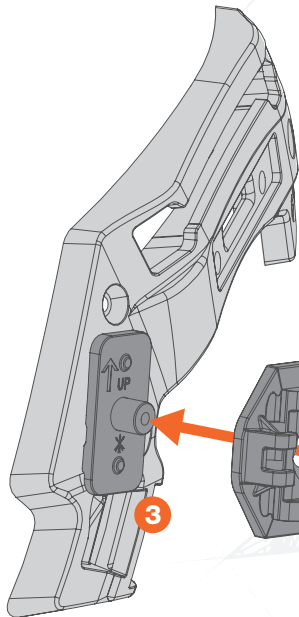
## INSTALLATION INSTRUCTIONS



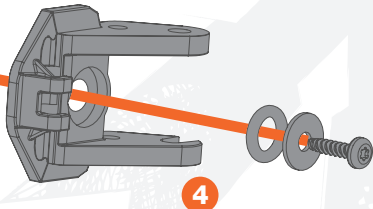
- 1** Slide Platform Adapter™ Stud into rear T-Slot on EXFIL™ Rail. Ensure the Stud is fully seated in the rail slot. No removal of the rail is required for installation.
- 2** Push Platform Adapter™ Plate over Stud Post. Ensure the upward arrow on the plate is facing outward and upward.

# PLATFORM ADAPTER for *opscore* AMP™ and EXFIL™ RAIL

## INSTALLATION INSTRUCTIONS

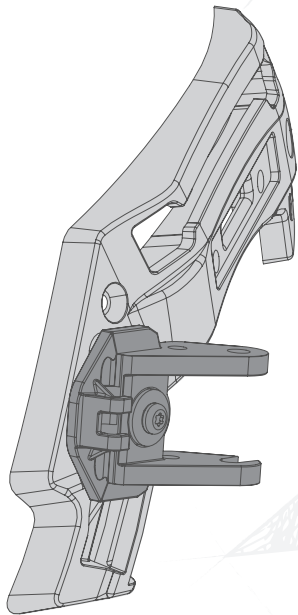


- 3 When properly installed, Platform Adapter™ Plate will nest in ramped portion of EXFIL™ Rail.
- 4 Remove center screw from AMP™ Helmet Adapter Arm and pull ARC™ Rail Adapter off. Take care to not lose the washer and rubber o-ring. Set ARC™ Adapter aside. Press AMP™ Helmet Adapter Arm assembly over exposed Platform Adapter™ Stud and Plate. Replace o-ring and washer.



# PLATFORM ADAPTER for *opscore*™ AMP™ and EXFIL™ RAIL

## INSTALLATION INSTRUCTIONS



- 5** Reinstall center screw. Torque to 16-18 in-lb. When properly tightened, AMP™ Helmet Adapter Arm assembly will not slide on rail. It should only be able to pivot. **DO NOT OVER TIGHTEN.**