

MARK™ ARC™ RAIL INSTALLATION INSTRUCTIONS

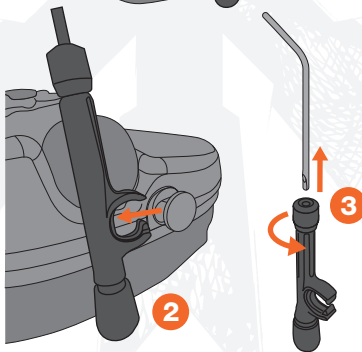
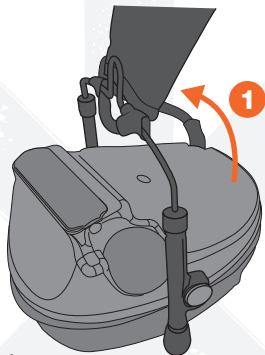


1 Remove 3M Peltor™ headset from OEM headband assembly by pivoting headband stems 90° on ear cups. This will line up the flat surfaces on the ear cup studs.

2 Pop stems off studs on ear cups. Free the headband cable from the headband cover by carefully slicing open leather cover with an X-Acto blade. DO NOT KNICK THE WIRE WHILE CUTTING.

3 Turn stems 90° on OEM wire forms and pull them off the wires.

4 Reassemble the stems in reverse order on the MARK™ wire forms.

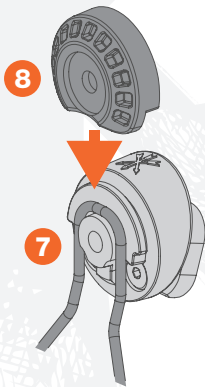
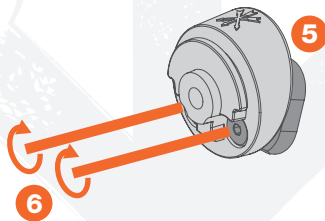


MARK™ ARC™ RAIL INSTALLATION INSTRUCTIONS



Remove Center Screw / Washer, Top Cap, and Wire Form from hub assembly. Loosen the two Low-Profile Screws, creating a very slight gap. DO NOT RELEASE BACKER PLATE FROM MARK™ LOWER ASSEMBLY.

- 5 Slide MARK™ Dovetail Backer Lower Assembly into desired position on helmet rail. NOTE: MARK™ IS DESIGNED TO WORK WITH GENUINE OPS-CORE™ ARC RAIL.
- 6 Once assembly is in desired location, tighten Low-Profile Screws (finger tight).
- 7 Place MARK™ Wire Form Arm with attached OEM headset onto installed MARK Lower Assembly.
- 8 Slide MARK™ Top Cap onto MARK Lower Assembly from the top down.



MARK™ ARC™ RAIL INSTALLATION INSTRUCTIONS



- 9 Reinstall Washer and Center Screw. The screw should be finger tight. Tension adjustment can be made from there depending on the individual preference. MARK™ is designed to pivot on rail for stowage when not in use.

NOTE: INWARD PRESSURE OF EAR CUPS CAN BE ADJUSTED BY BENDING THE WIRE FORMS INWARD OR OUTWARD.

MARK™ SYSTEM CAN BE USED WITH MSA/SORDIN™ - BASED HEADSETS WITH ADDITION OF UNITY TACTICAL SARA™ (SORDIN ARC RAIL ADAPTER) KIT, SOLD SEPARATELY.

